



INSTRUCTION BULLETIN

No. 9008463
Machine: T16
Published: 03-2011
Rev. 00

NOTE: DO NOT DISCARD the Parts List from the Instruction Bulletin. Place the Parts List in the appropriate place in the machine manual for future reference. Retaining the Parts List will make it easier to reorder individual parts and will save the cost of ordering an entire kit.

NOTE: Numbers in parenthesis () are reference numbers for parts listed in Bill of Materials.

Installation instructions for **kit number 9008054**

SYNOPSIS:

This kit contains the parts needed to replace the squeegee turnbuckle on T16 machines. Please follow step-by-step instructions.

SPECIAL TOOLS / CONSIDERATIONS: NONE

(Estimated time to complete: 1 hour)

PREPARATION:

1. Park the machine on a clean level surface, completely lower the rear squeegee, turn off the machine, and remove the key.

FOR SAFETY: Before leaving or servicing machine, stop on level surface, turn off machine, and remove key.

2. Disconnect the vacuum hose from the rear squeegee.

INSTALLATION:

1. Remove the turnbuckle from the machine. Discard the turnbuckle and hardware.
2. Adjust the new turnbuckle (1). Turn the rod end located closest to the adjustment knobs into (clockwise) the turnbuckle and then turn the rod end nine turns out (counterclockwise) from the turnbuckle. Refer to Fig. 1.
3. Loosen the turnbuckle lock knob and then hand tighten the adjustment knob completely in. Refer to Fig. 1.

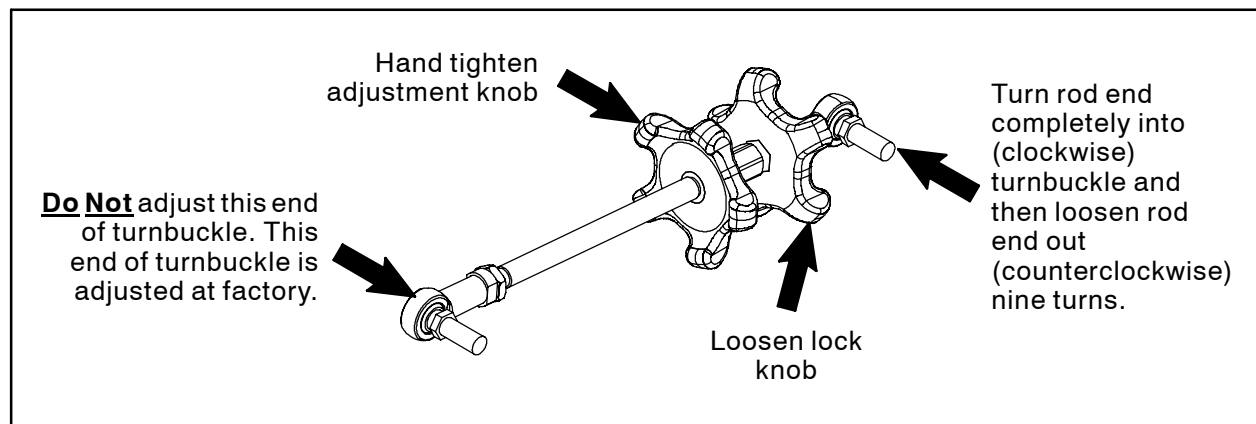


FIG. 1

4. Use a M10 hex nut (2) and a flat washer (3) to install the turnbuckle (1) onto the rear axle assembly. Refer to Fig. 2.
5. Use a M10 hex nut (2) and a flat washer (3) to install the turnbuckle (1) onto the squeegee lift arm assembly. Refer to Fig. 2.
6. Level the rear squeegee blade and adjust the rear squeegee blade deflection. Refer the Maintenance Section of the Operator Manual for instructions how to level the squeegee and adjust the rear squeegee deflection.

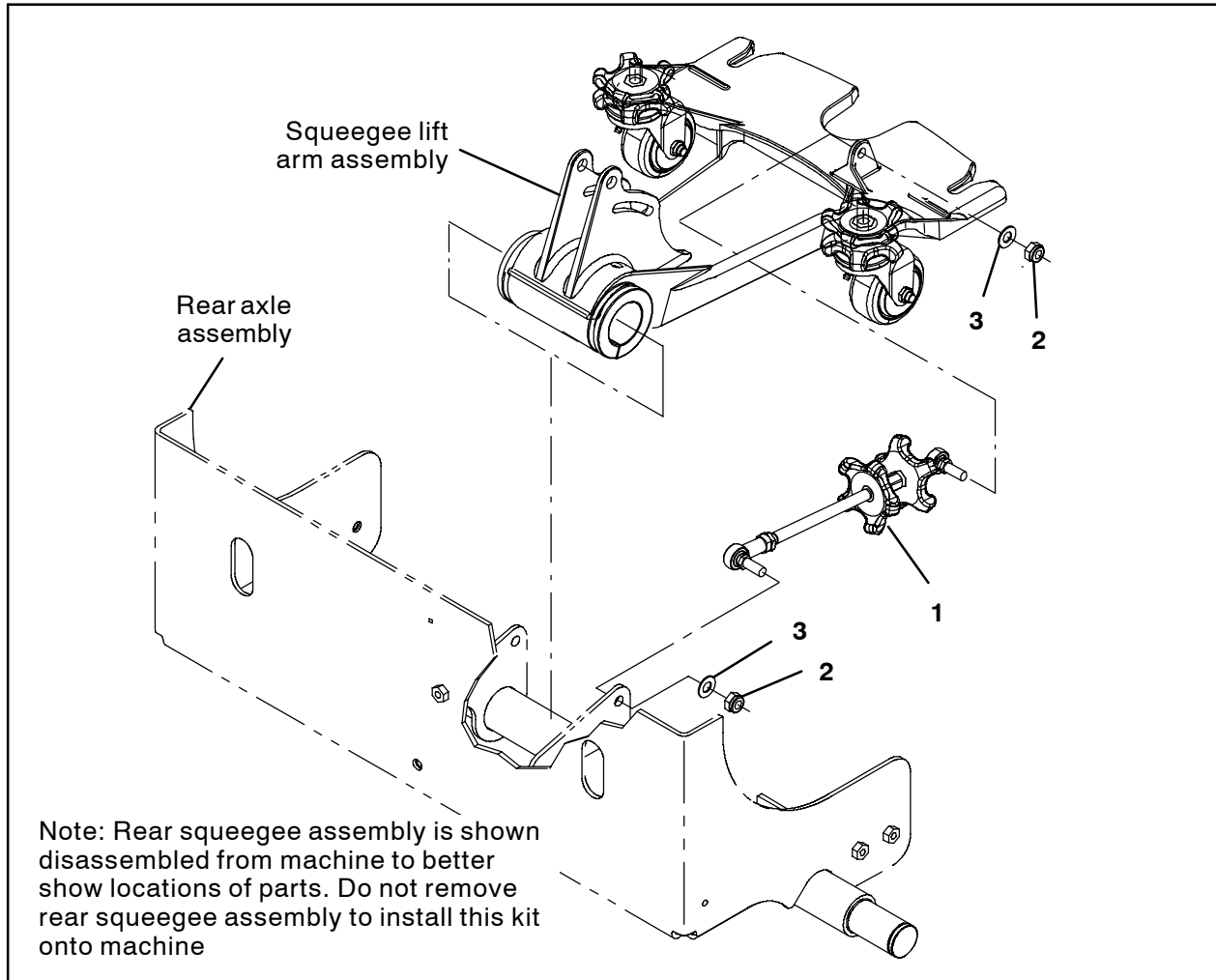


FIG. 2

Bill Of Materials For Rod Assy, Sqge, Replmt [T16] - 9008054

| | Tennant | | | |
|------|-----------|-----------------------------------|--|------|
| Ref. | Part No. | Description | | Qty. |
| ▽ | 9008054 | Rod Assy, Sqge, Replmt [T16] | | 1 |
| ▲ | 1 1053097 | Rod Assy, Sqge | | 1 |
| ▲ | 2 08714 | Nut, Hex, Lock, M10 X 1.5, NL, SS | | 2 |
| ▲ | 3 01686 | Washer, Flat, 0.44B 1.00D .08, SS | | 2 |

TENNANT COMPANY
P. O. Box 1452
Minneapolis, MN 55440-1452